



- **Mobility Exchange® WLAN Controllers**

Trapeze Mobility Exchange (MX) controllers deliver the utmost wireless LAN security and scalable switching while enabling seamless integration with existing wired LANs.



- **Mobility Point® WLAN Access Points**

The Trapeze Mobility Point family provides access point, bridging and wireless mesh networking for indoor and outdoor deployments of Smart Mobile wireless LANs.



- **RingMaster® WLAN Management**

Award winning RingMaster enables IT managers to centrally plan, configure, monitor and optimize their Smart Mobile wireless LANs.

- **SmartPass™ Advanced Access Control for Enterprise Wireless LANs**

SmartPass enables organizations to provide convenient, secure, and tightly managed guest access over their wireless networks.

Product Overview

Trapeze Networks® makes all the components required to deploy a NonStop Wireless™ LAN for any size enterprise. The solution includes Mobility System Software, a full line of intelligent WLAN controllers, access points, as well as the award winning RingMaster wireless management suite and SmartPass access control software.

Trapeze Networks wireless LANs are built upon the Smart Mobile architecture. Smart Mobile overcomes all the limitations of current-generation WLANs through breakthrough technology called “intelligent switching”—a significant evolution and advance over today’s limited WLAN architectures.

Smart Mobile’s intelligent switching combines both centralized and distributed data forwarding based on the requirements of the underlying application, resulting in optimized traffic flow, reduced latency, and ultra high performance—all without the high cost of upgrading network controller infrastructure.

Smart Mobile is the only WLAN architecture optimized for voice. Voice over Wi-Fi requires low latency, efficient traffic forwarding and toll-quality service. Smart Mobile delivers. Users can connect once to the network, authenticate and roam freely, enjoying strong, clear voice quality without disruption throughout the enterprise. Smart Mobile also delivers system level resiliency that is second to none—enabling NonStop wireless voice services.

Trapeze Networks enables organizations to cost effectively deploy secure, massively scalable enterprise WLANs that support the most demanding data and voice applications while providing unlimited reach both indoors and outdoors.

Key Features/Benefits

Voice-optimized Traffic Forwarding

The centralized architecture of today’s enterprise WLANs results in excessive latency, because every voice packet has to pass through the WLAN controller before reaching its ultimate destination—making large-scale deployment of voice over WLAN virtually impossible. Smart Mobile’s intelligent switching overcomes this limitation, by forwarding voice traffic in distributed fashion along the shortest path, rather than through the central controller. This minimizes network latency, enabling VoWLAN deployments for thousands of users.

Advanced Fast Roaming

As voice over WLAN users move throughout the network, their voice connections need to quickly and efficiently hand off from one access point (AP) to another to avoid degraded quality and dropped calls. With other WLANs, when security is enabled, cross-controller roaming is problematic, resulting in frequent call failures. Smart Mobile implements the most advanced industry standards for fast roaming to provide the highest levels of service continuity and security.

Wizard-based Voice Configuration

Implementing voice over WLAN requires potentially complex configurations such as setting policies, defining service levels, and specifying support of multiple handset types. RingMaster network management software dramatically simplifies voice configuration. Only RingMaster provides wizards that guide you step by step, making voice planning and configuration fast and easy.

Land-line Quality Voice

Trapeze is the only WLAN vendor shipping an IEEE standards-based voice over Wi-Fi solution today that delivers true toll-quality voice. Smart Mobile implements leading-edge voice quality standards, including Wi-Fi Multimedia (WMM), 802.11e and TSPEC. Users enjoy clear, crisp voice quality while roaming throughout the network. Furthermore, only Trapeze Smart Mobile delivers NonStop wireless to ensure five-nines availability for voice.

"The whole implementation has been pretty painless. We have a small staff that is able to manage what is becoming quite a large wireless implementation. We like Trapeze's solution because it helps us be in 10 places at once – virtually, anyway."

— Jim Ennis
Director, Technology Services
and Support
Solano Community College

"RingMaster remains the most powerful wireless LAN management tool on the market."

— Cliff Weaver
Director of MIS
Memorial Hospital

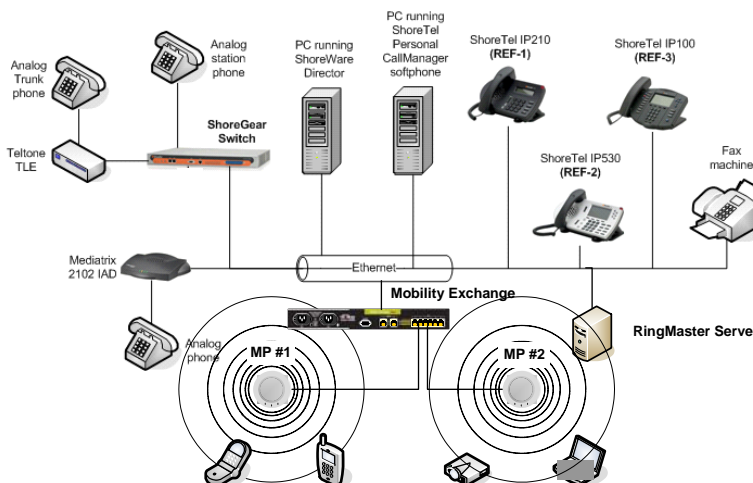
"Trapeze provides excellent security and amazing tools that plan, configure and manage the air, while lowering the total cost of ownership."

— Pierre-Olivier Monnier
Worldwide Director of IT
Infrastructure and
Chief Technology Officer
Logitech

Extensive Handset Support

Trapeze Smart Mobile networks support an extensive array of handsets including:

- Ascom i75
- Avaya 3616, 3626
- D-Link DPH-540, DPH-541
- NEC 9000i, 900iL, 902iL
- Nokia E60, E61, E61i, E65, N80i
- Nortel WLAN Handset 2210, 2211
- Polycom (formerly SpectraLink) NetLink 8020, 8030, h340, e340, i640
- UTStarcom F1000
- Vocera Communications Badge (and all OEM variants)
- ZyXEL P-2000W



Customer Value

ShoreTel IP telephony solution infrastructure provides businesses with a secure, cost-effective, and scalable VoIP solution that is easy to manage. Trapeze wireless networks are the only wireless LANs optimized for voice over Wi-Fi communications. The Smart Mobile architecture delivers seamless roaming, higher reliability and easier manageability than conventional wireless networking solutions.

About Trapeze Networks

Trapeze Networks invents, makes and markets the only NonStop Wireless™ network for the always-on enterprise. Trapeze Smart Mobile architecture delivers unmatched reliability, performance, manageability and security. Smart Mobile enables mission critical mobility applications such as voice communications, patient care systems, ubiquitous student and faculty access, and location tracking, while delivering uninterrupted campus-wide network access, indoors and outdoors.

About ShoreTel, Inc.

ShoreTel is a leading provider of enterprise IP telephony solutions. The Trapeze Networks - ShoreTel solution provides customers with a number of key benefits, including ease of use, manageability and lower total cost of ownership.

Disclaimer

To be "ShoreTel Certified" means that Technology Partner's product will inter-operate with the ShoreTel system, but ShoreTel does not certify that the features or functionality of Technology Partner's product will perform as specified by Technology Partner nor that Technology Partner's product will meet your specific application needs or requirements. To inter-operate means that Technology Partner's product is able to exchange, use and share information with the ShoreTel system.



Trapeze Networks

5753 West Las Positas Blvd.
Pleasanton, CA 94588
+1 (877) 359-8779
info@trapezenetworks.com
www.trapezenetworks.com



960 Stewart Drive Sunnyvale, CA 94085 USA Phone +1.408.331.3300 +1.877.80SHORE Fax +1.408.331.3333 www.ShoreTel.com

Copyright © 2008 ShoreTel. All rights reserved. The ShoreTel logo, ShoreTel, ShoreCare, ShoreGear, ShoreWare and ControlPoint are registered trademarks of ShoreTel, Inc. in the United States and/or other countries. ShorePhone is a trademark of ShoreTel, Inc. in the United States and/or other countries. All other copyrights and trademarks herein are the property of their respective owners.